

#### **SCINUS CELL EXPANSION NETHERLANDS B.V.**

Scinus Cell Expansion Netherlands BV is a biotech company, developing innovative technologies for cell culture. Our mission is to make cell therapies accessible for a global patient population. The core activities of Scinus Cell Expansion include the development and marketing of an innovative bioreactor platform technology for the cell culture industry. The SCINUS bioreactor offers a cost-effective, controlled alternative to conventional cell production strategies. The patented technology allows cell culture professionals to perform the entire cell expansion process, from biopsy to clinical relevant cell numbers, within one closed system. Therefore, our bioreactor technology is ideal for scale-out of (stem) cell culture. Scinus Cell Expansion also offers services to assist its clients in the translation to a commercial-scale GMP production strategy for their cell products.

#### **SCINUS CELL EXPANSION NETHERLANDS B.V.**

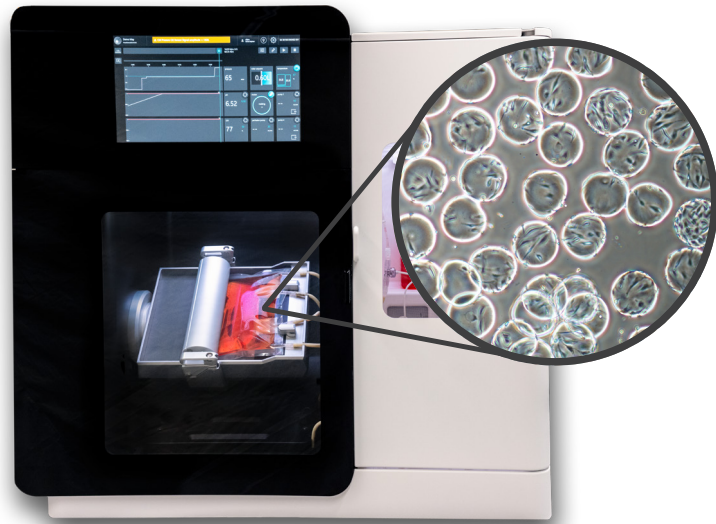
Professor Bronkhorstlaan 10, building 48  
3723 MB Biltoven  
The Netherlands  
Phone: +31850509300  
Email: [info@scinus.com](mailto:info@scinus.com)  
Web: [www.scinus.com](http://www.scinus.com)



## **CONTROLLING GROWTH**

### **OPTIMAL CLOSED-LOOP CULTURE ENVIRONMENT**





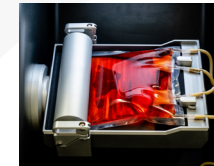
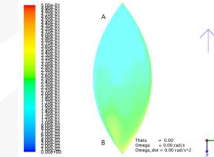
## THE SCINUS CELL EXPANSION SYSTEM

- Is a fully closed, controlled bioreactor system for automated cell cultivation. It consists of a proprietary hardware enclosure combined with a single-use culture bag, in which cells are expanded
- Enables you to grow clinically relevant cell numbers directly from a biopsy, due to its unique expansion technology (volume range 0.05 – 1.4 L). No need to passage your cells as you expand
- Features a patented agitation and expansion platform that maintains a homogenous environment, while minimizing shear stress
- Uses trusted, industry standard, software that ensures an optimally controlled (ph, oxygen, temperature) culture environment
- Allows you to take fully representative (cell) samples at any point during culture
- Is designed for use in gmp production. Bioreactor hardware is ce marked and is fully compatible with third-party part11-compliant software. The single-use culture bag uses usp class vi plastics and is tested extensively for biocompatibility.
- Can be easily integrated with various upstream and downstream processing solutions through sterile welding
- Results in significant cost reduction, due to reduced operator involvement and medium expenses. The system can be operated outside of clean room environments thanks to its closed design.

## FEATURES



- Continuously monitor and control the state of your culture through the integrated sensors for pH and oxygen.
- Continuous perfusion of your culture, but still the possibility for accurate sampling.



- Maintain a homogenous, low shear environment with the unique agitation platform.
- Unique volume-expandable technology
- Easy to use Graphical User Interface

## SPECIFICATIONS

Volume range	0.05 – 1.4 L
Rocking angle	+/- 100°
Rocking velocity	0 – 500 °/s
Rocking time	0 to 100 hours
Horizontal hold	0 to 100 hours
DO range	0 – 500 % air saturation
pH range	5.5 – 8.5
Temperature range	Ambient to +45 °C